

**SAFETY
REST AREA
PROGRAM**



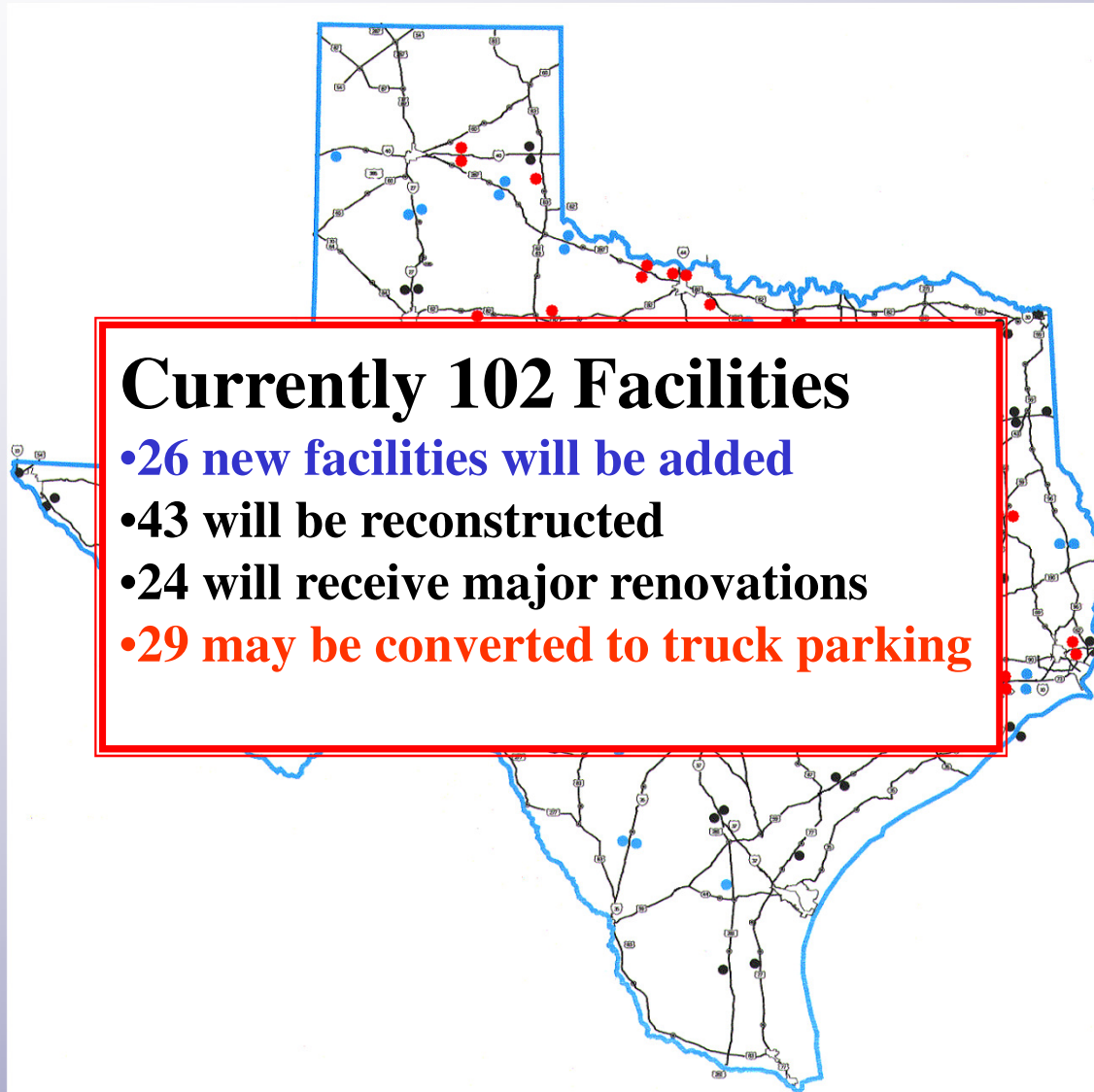
Safety Rest Area Program **&** **Texas Travel Host**

Texas Travel Host, Investing in the Future



A Joint Project between;
Texas Department of Transportation
Texas A&M University System
Texas Department of Economic Development
Texas Parks & Wildlife Department
Southwest Texas State University

Texas Safety Rest Areas



Texas Travel Host Goals

1. To provide important, and timely information & services to travelers—*Safety & Security.*
2. Provide a boost to area economies.
3. To provide a way for communities and businesses to promote themselves.
4. Create a mechanism for better regional tourism coordination by establishing regional Internet based networks.

Goal 1—Serving Our Guests

- Tourism information
- Weather
- Local events
- Road conditions
- Route information
- Safety information
- TxDOT & Partners Promotion
- User Surveys—
Tourism Market Match
- Email—Postcards
- Maps, directions—local
- Missing children notices
- Regional interpretation
- Other special interest

Goal 2—Boosting Rural Economies

- Options for rural areas is limited—tourism is a popular option.
- Traffic Count Avg. 674 Cars/day (73-1534).
- People drive by without knowing what they are missing.
- TTH will help communities better “Package” their tourism opportunities.
- Tourism Market Match could provide valuable information about travelers across the State.

Goal 3—Community, Business Promotion

- Marketing is #1 issue for community tourism.
- TTH provides a vehicle to attract local guests who are currently “just passing by”.
- “Tell the World”—Same resources could be accessed via the World Wide Web.
- Creativity, enthusiasm and ingenuity could dramatically improve impact.

Goal 4—Regional Tourism Networking

Challenges

- Ways for areas to organize & coordinate their efforts.
- Not enough \$\$\$.

Texas Travel Host can be a solution.

- Provides rallying point for area communities.
- Technology provides structure while also facilitating networking & communication.
- Texas Travel Host is inexpensive!

**SAFETY
REST AREA
PROGRAM**

An Exciting Opportunity

New Rest Area sites Conley County IH 40



Texas Travel Host, Investing in the Future



**SAFETY
REST AREA
PROGRAM**

Kenedy County US 77



Texas Travel Host, Investing in the Future



**SAFETY
REST AREA
PROGRAM**

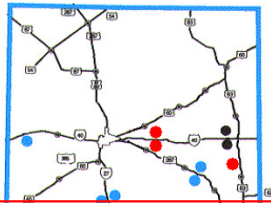
Hardeman County US 287



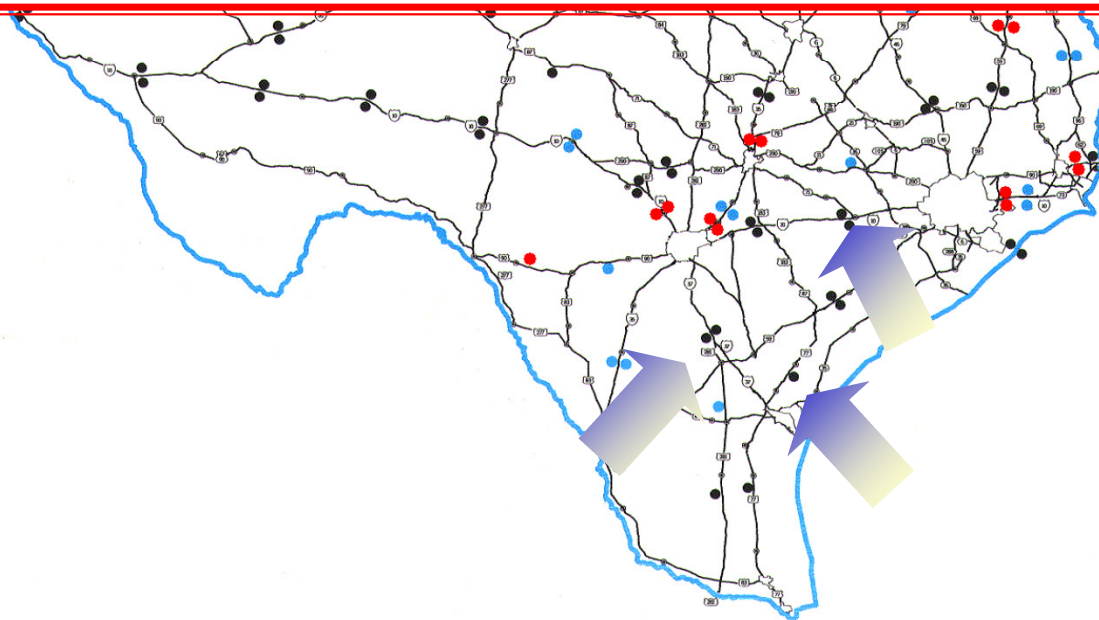
Texas Travel Host, Investing in the Future



Texas Travel Host Pilot Sites



- On I-10 in Colorado county near Columbus, Texas
- On I-37 in Live Oak county between San Antonio & Corpus Christi
- On State Highway 59 in Victoria county near Victoria, Texas



**SAFETY
REST AREA
PROGRAM**

Colorado County IH 10



Texas Travel Host, Investing in the Future



**SAFETY
REST AREA
PROGRAM**

Introducing Texas Travel Host



Texas Travel Host, Investing in the Future



I don't know why
that guy's over
there. This Travel
Host thing is Great!

**SAFETY
REST AREA
PROGRAM**

Introducing Texas Travel Host



Texas Travel Host, Investing in the Future



Welcome to the Colorado County Texas Travel Host

Your source for important travel information while in the Great State of Texas

ACCOMMODATIONS

ATTRACTIONS

LOCAL EVENTS

LOCAL PLACES,
PEOPLE & HISTORY

ROAD CONDITIONS

ROUTES & MAPS

SAFETY &
SECURITY

SERVICES

WEATHER

Emergency
Services

EMS Hospital Texas DPS

About Your Host



Expressway

This service brought to you through a collaborative effort between

Local area communities & businesses across Texas

Texas Department of Transportation

Texas A&M University System

Texas Department of Commerce

Texas Parks & Wildlife Department

Texas Arts Commission

Center for Nature & Heritage Tourism

Texas Historical Commission

Texas Department of Agriculture

Texas Department of Public Safety

This Project was developed by the International Tourism Center in the Dept. of Recreation, Park & Tourism Sciences at Texas A&M University

ACCOMMODATIONS

ATTRACTIONS

LOCAL EVENTS

LOCAL PLACES,
PEOPLE & HISTORY

ROAD CONDITIONS

ROUTE

SA
SE

SE

WE

Emergency
Services
EMS Hospital Texas DPS

About
TxD

This service is provided through a collaborative effort between
Local area businesses across Texas

Transportation
System
of Commerce

Texas Parks & Wildlife Department
Texas Arts Commission
Center for Nature & Heritage Tourism

Texas Historical Commission
Texas Department of Agriculture
Texas Department of Public Safety

was developed by the International Tourism Center in the Dept. of Recreation, Park & Tourism Sciences at

SAFETY
REST AREA
PROGRAM



Introducing Texas Travel Host

Search: Go

[Home](#) | [Contact Us](#) | [Tools](#) | [Links](#) | [What's New](#) |

[Help](#)

DOT Links®

Select A Link...

View Reports By

[Conditions](#)

[Roadways](#)

[Districts](#)

[Counties](#)

[Regions](#)

Other Related Areas

[Metropolitan Closures](#)

[Load Restricted Bridges](#)

[Permit Restrictions](#)

[Traffic Centers](#)

[Texas Weather](#)

All Road Conditions for Texas Travel Map Coordinate 19-P

Updated: Nov 20, 2002 3:50PM CST

TxDOT Road Condition Disclaimer

These reports reflect TxDOT's best information at the times filed. Conditions can change rapidly. No warranty of accuracy or completeness is expressed or implied.

Interstate 10 (KATY FREEWAY) Eastbound has a **Construction** condition **with a Delay** in **Waller** County from THE BRAZOS RIVER to FM 359
ALTERNATE CLOSED DAILY 8 AM TO 5 PM MONDAY-FRIDAY, NOVEMBER 18-22.

(Condition reported by **Houston District** on 11-18-2002 8:12 AM is expected to expire on 11-22-2002 6:00 PM. Texas Travel Map: **19-P**)

US Highway 290 Eastbound has a **Construction** condition **with a Delay** in **Washington** County from FM 577 to FM 1155

EASTBOUND TRAFFICE REDUCED TO ONE LANE AND DRIVERS MAY EXPERIENCE SOME BACKUP DELAYS.

(Condition reported by **Bryan District** on 8-19-2002 11:44 AM is expected to expire on 11-30-2002 11:41 AM. Texas Travel Map: **19-P**)

Farm-to-Market 2193 East/Westbound has a **Damage** condition **with a Delay** in **Washington** County from COPELAND SPRINGS RD. to FLEWELLEN RD.

PAVEMENT DAMAGE DUE TO HIGH WATER

(Condition reported by **Bryan District** on 11-19-2002 4:30 PM is expected to expire on 11-25-2002 3:25 PM. Texas Travel Map: **19-P**)

© Copyright 2002, TxDOT
All Rights Reserved.

[Disclaimer](#) | [Content Usage](#) | [Privacy Policy](#) | [Open Records](#) | [Accessibility](#) | [TxDOT Contacts](#)

Te

Colorado County Texas Travel Host

Important travel information while in the Great State of Texas

ROUTES & MAPS

SAFETY &
SECURITY

SERVICES

WEATHER

About Your Host

Texas DPS



TxDOT Expressway

DOT Links®

Select A Link...

- Texas Traffic Safety**
- Road Tips
- TV/Radio
- About us
- Grants
- Other Safety Sites
- Safety Contacts
- Safety Feedback
- Safety News
- Safety Search
- Traffic Safety Manual


ROAD TIPS

Distractions and Cautions



Cell Phones and Driving.

People who use wireless phones while driving have a 34 percent higher risk of a collision than those who do not talk and drive. Even using a hands-free phone can be dangerous, because talking on the phone diverts your attention from driving. Long, complex conversations make you four times more likely to have a car crash. Pull safely off the road if you need to make a call.

Wake Up and See The Road.

Texas highways have more than 100 rest stops where motorists can take regular safety breaks. In addition, drowsy drivers can take these precautions:

- avoid driving during late night and early morning hours
- set realistic travel goals
- eat healthy meals and avoid alcohol and other drugs
- switch drivers every two hours, even if you don't feel tired
- stop every two hours to stretch

A Car is Not a Boat.

Flash flooding is the number one cause of weather-related deaths in Texas. As little as two feet of flooding will float most vehicles. Avoid flooded roads, streets and low areas.

- you can be fined up to \$200 for driving around barriers blocking low-water crossing (Move or tamper with a barricade, and you can be fined up to \$1,000 and/or jailed up to two years in jail.)
- never try to walk, swim or drive through swift water
- stay informed about weather conditions when you are driving
- if your vehicle stalls in deep water, leave it and move to higher ground, if you can do so safely

Railroad Crossings

Texas law requires motorists to yield the right of way to trains. It is also against the law to cross tracks if a train is visible or to drive around gates that have been lowered at a railroad crossing. If the gates are down and no train is coming, the road is closed. (WARNING: Not all railroad crossings are marked with gates or flashing signals, especially in rural areas.)

In a collision with a train, you are 40 times more likely to be killed than if you were in a collision with another car.

Reduce speed when approaching crossings, look both ways and listen for the sound of a train.

If red lights are flashing or if crossing arms have been lowered, stop.

Never stop on tracks. (A train going 50 miles per hour needs a mile and a half to stop.)

NS
S
S
RY
NS

ROUTES & MAPS

SAFETY &
SECURITY

SERVICES

WEATHER

Emergency
Services

at Your Host

TxDOT *Expressway*

Culture
Public Safety
& Tourism Sciences at Texas A&M University



Your National Weather Service forecast

Columbus, TX



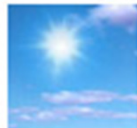

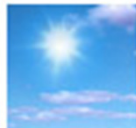

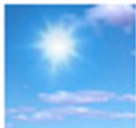



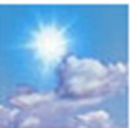
Enter Your "City, ST" or zip code

Go

NWS Houston, TX Homepage

Forecast as of: 430 AM CST WED NOV 20 2002

Forecast at a Glance

TODAY	TONIGHT	THURSDAY	THURSDAY NIGHT	FRIDAY	SATURDAY	SUNDAY	MONDAY	TUESDAY
								
Mostly Sunny Hi 75°F	Mostly Clear Lo 45°F	Mostly Sunny Hi 70°F	Mostly Clear Lo 48°F	Mostly Clear Hi 65°F	Mostly Clear Hi 68°F Lo 40°F	Partly Cloudy Hi 72°F Lo 50°F	Showers Possible Hi 62°F Lo 55°F	Partly Cloudy Hi 58°F Lo 40°F

Detailed 7-day Forecast

Hazardous weather condition(s):

Hazardous Weather Outlook

Today. Mostly sunny. Highs in the mid 70s. Northwest winds 5 to 10 mph.

Tonight. Mostly clear. Lows in the mid 40s. Light northwest winds.

Thursday. Mostly sunny. Highs around 70. Northwest winds near 10 mph.

Thursday night. Mostly clear. Lows in the upper 40s.

Friday. Mostly clear. Highs in the mid 60s.

Saturday. Mostly clear. Lows near 40. Highs in the upper 60s.

Sunday. Partly cloudy. Lows near 50. Highs in the lower 70s.

Current Conditions

Brenham Municipal Airport

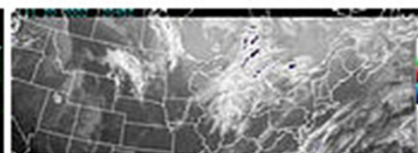
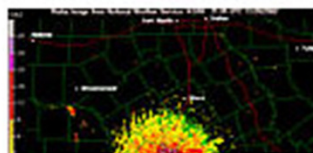
Last Update on Nov 20, 3:04 pm CST

Fair

77°F
(25°C)

Humidity:	26 %
Wind Speed:	NW 7 MPH
Barometer:	30.08"
Dewpoint:	39°F (4°C)
Heat Index:	77°F (25°C)
Visibility:	10.00 mi.
More Local Wx:	2 Day History:

Radar and Satellite Images



How Do We Get This Done?

Much has Already Been Done

- *Texas INFRONT* provides the basis for gathering information and providing access.
- *Tourism Market Match* and surveys are in place.
- Most other information available via the Web.
- Technical & Hardware is a matter of details.
- High-speed connections—likely supportable using Direct PC or other provider.
- TCE is working with other regional groups to accomplish these organizational tasks.

What are the Next Steps?

- Identify Partners and define roles.
- Identify project coordinator.
- Identify additional resources and support.
- Develop a Strategy for facilitating community gathering of information.
 - Attractions, accommodations, businesses etc.
 - Interpretive materials—tentative plan complete-CNHT
- Evaluate pilot sites, physical and area wide.
- Hardware and facilities (rest area).